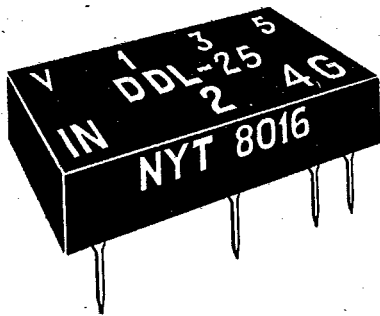


Nytronics Components Group, Inc.

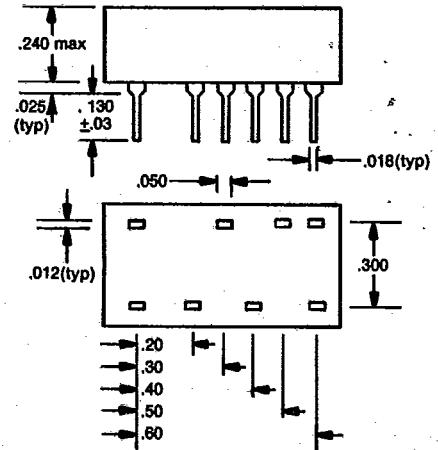
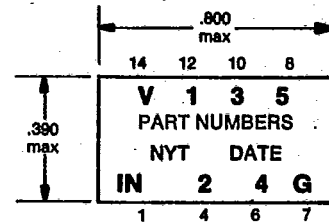
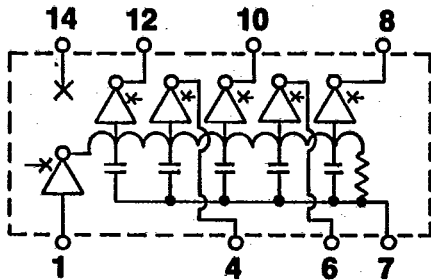
700 ORANGE STREET, DARLINGTON, S. C. 29532
(803) 393-5421 — TWX 810-665-2182

DDL-XXX SCHOTTKY DELAY LINES



FEATURES

- TTL Driven Inputs
- TTL Buffered Outputs
- Internal Terminations
- Low Profile Packages (.240")
- 14-Pin, DIP-IC Compatible
- Output Rise Time 4.0ns max. (0.75V to 2.40V)



RECOMMENDED OPERATING CONDITIONS

(Vcc) Supply Voltage	5.00 ±0.25VDC
(Icc) Supply Current	55ma Typ./70ma Max.
(TRin) Input Rise Time	3ns.
(TWin) Input Pulse Width	40% of Delay
(Ein) Input Pulse Voltage	3.20VDC
Operating Temperature	0°C to 70°C
Storage Temperature	-55°C to +125°C

ELECTRICAL CHARACTERISTICS

(VIH) High-Level Input Voltage	2.0 to 5.0V
(IIH) High-Level Input Current	50ua Max.
(VIL) Low-Level Input Voltage	0.8V Max.
(IIL) Low-Level Input Current	-2ma Max.
(VOH) High-Level Output Voltage	2.4V Min.
(VOL) Low-Level Output Voltage	0.4V Max.
High-Level Output Drives	20 TTL Loads/Unit Max.
Low-Level Output Drives	10 TTL Loads/Tap Max. 20 TTL Loads/Unit Max.

PART NUMBER	TOTAL DELAY (NS) (1) (2)	TAP DELAY (NS) (1) (2)	INPUT PULSE WIDTH (NS MINIMUM)
DDL-25	25	5	10
DDL-30	30	6	12
DDL-35	35	7	14
DDL-40	40	8	16
DDL-45	45	9	18
DDL-50	50	10	20
DDL-55	55	11	22
DDL-60	60	12	24
DDL-65	65	13	26
DDL-70	70	14	28
DDL-75	75	15	30
DDL-100	100	20	40
DDL-125	125	25	50
DDL-150	150	30	60
DDL-175	175	35	70
DDL-200	200	40	80
DDL-250	250	50	100
DDL-300	300	60	120
DDL-350	350	70	140
DDL-400	400	80	160
DDL-450	450	90	180
DDL-500	500	100	200

(1) Measured at 1.5V level leading edge; Vcc = 5.00VDC; No loads; at +25°C.

(2) Nominal delay, ±2NS or ±5%, whichever is greater, reference to input.

www.DataSheet4U.com